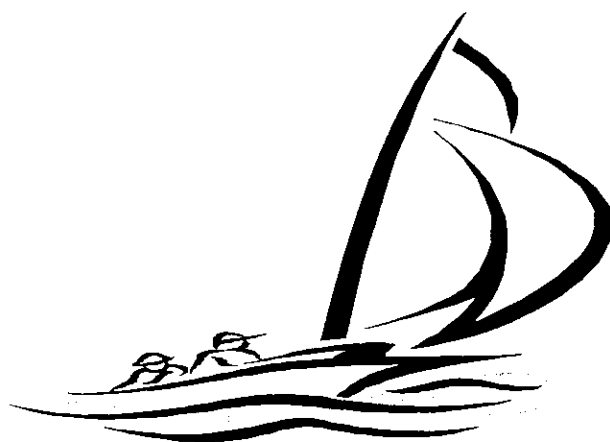


**WATERWAYS AUTHORITY
CYCA
SYDNEY TO
HOBART
START**



**SATURDAY
26 DECEMBER 1998**

SYDNEY HARBOUR

Reference: Marine Notice 12/98

Waterways
We're With You On The Water

SYDNEY TO HOBART YACHT RACE 1998

Contents

1. SCHEDULE OF EVENTS	3
2. CONTROLLED USE AREA	4
2.1 EMERGENCY AND MEDIVAC TRANSFER LOCATIONS	4
2.2 CO-ORDINATION - EMERGENCY	4
2.3 LAND SAFETY CONTROL CENTRE	4
2.4 RESPONSIBILITY	5
2.5 COMMAND & CONTROL STRUCTURE	5
2.6 COMMUNICATIONS	6
2.7 DUTIES & RESPONSIBILITIES	7
3. VESSELS	7
3.1 WATERWAYS AUTHORITY VESSELS	7
3.2 WATER POLICE	8
3.3 CYCA RACE CONTROL VESSEL	8
3.4 ROYAL VOLUNTEER COASTAL PATROL/AUSTRALIAN VOLUNTEER COAST GUARD	8
3.5 MEDIA VESSELS	8
4. STARTING LINE	10
5. IDENTIFICATION	10
5.1 RACE COMPETITORS	10
5.2 WATERWAYS CONTROL	11
5.3 DESCRIPTION	11
5.4 CONDITION	11
6. SPECTATOR CRAFT & COMMERCIAL VESSELS - MOVEMENTS & MOORING	11
7. MANLY FERRY/JET CAT TIMETABLES/CHARTER VESSELS	12
8. BROCHURE DISTRIBUTION	12
9. PARADE OF SAIL	12
10. AUSSIE ONE, OLYMPIC SPIRIT AND AUSSIE MAGIC	13
11. START GUNS	13
12. DISTRIBUTION	14

Enclosure 1 Marine Notice 11/98

Enclosure 2 Parade of Competitors CANCEL

Enclosure 3 The Start Zones

Enclosure 4 Screen Sectors

H.data.general.sydhob 98.doc Version updated on 18 December 1998

1. SCHEDULE OF EVENTS

0600	Begin laying buoys	CYCA/Harbour Cleaning
0900	Gather for coffee	Waterways Rozelle
0930	Senior Marine Investigator briefs	Waterways, SPA, Water Police, R.V.C.P., A.V.C.G. and RMYC personnel at Waterways, Rozelle, Cruising Yacht Club sailing adviser Donald Walker Smith in attendance.
1000-1500	Port closed to major commercial shipping.	
1030	VIP boats, Olympic Spirit, Aussie Magic and Aussie One depart Darling Harbour.	
	Buoys in place for parade	CYCA/Waterways
	Activate 'No Wash / 10 Knot Zone signage and monitoring regime at Bradleys Head / Clarke Is.	
1030-1230	Controlled access to Rushcutters Bay	
	Waterways Patrol vessels and RIBs attend	
1100	All Control Vessels on station.	
	Waterways, Water Police, R.V.C.P., A.V.C.G., RMYC volunteers.	
	RIBs/vessels issue brochures.	
	MV Omega embarks Media Liaison Officer and representatives of the Media from Cruising Yacht Club as organised by Cruising Yacht Club.	
	Aussie One, Aussie Magic and Olympic Spirit in position for parade.	
1100	The first yachts clear CYCA marina for Parade of Sail.	
	VIP vessels assemble at designated positions at Parade of Sail Channel at Rushcutters Bay exit.	
1145	Radio check with Control Vessels. Call sign "Waterways Control". East flank control by R.V.C.P. West flank control by AVCG.	
1200	Activate Sydney Harbour Waterways Exclusion Zone.	
	Cruising Yacht Clubs check of big buoy positions commence.	
	Yacht manoeuvring and race area cleared of all spectator craft. All VIP boats move to designated places on starting line.	
	Start Vessel - <i>Offshore</i> in position at West end of Start Line.	
1215	Marker vessels on station at positions X-Ray, and Zulu (Four 12' x 7' special marker buoys) and at Start Lines.	
1215	YOUNG ENDEAVOUR, Radio Relay Vessel sail to control Point Z. Aussie One, and Aussie Magic in position mid line and 500m to the North of start line.	
1250	Ten minute gun for main fleet fired from Aussie One.	
1255	Five minute gun for main fleet fired from Aussie One.	
1300	Race start - Start Line at Nielson Park. Start Gun fired and race commences. VIP fleet remain ahead of fleet and escort to the Heads.	
1430	VIP boats return to respective berths.	

NOTE:

- 1) All course marker buoys will be laid and recovered by Cruising Yacht Club. Boundary buoys will be laid and recovered by Harbour Cleaning.
- 2) Marker buoys off Bradleys Head to be laid as late, and recovered as early as possible after the start.

3) Marker buoy Xray will be laid as close as possible to number 4 buoy.

Tide Details

high 0231 hours 1.20metres

low 0814 hours 0.50 metre

high 1427 hours 1.40metres

2. CONTROLLED USE AREA

2.1 EMERGENCY AND MEDIVAC TRANSFER LOCATIONS

Primary drop off points for persons requiring conveyance by ambulance are:

- HMAS Penguin

- UBD Ref Map 58 D 8

- Garden Island

- UBD Ref Map 2 D 5

Paramedics and St John Ambulance personnel will be on Control vessels stationed around the course.

In the event of person requiring medical attention, contact is to be made with "Waterways Control" in WA 001 who will relay information to the nearest vessel with medical personnel on board. If evacuation is necessary, "Waterways Control" is to arrange Medivac Point, Water Transport and Ambulance Services.

2.2 CO-ORDINATION - EMERGENCY

In the event of an emergency, the vessel identifying the problem is to transmit the emergency procedures as laid down in the Radio Operators Handbook issued by the Department of Transport and Communications. Should it be deemed necessary by the Commander Sydney Water Police, the Marine Disaster Plan (MARDAP) will be activated.

The overall direction and control of vessels within the port boundaries is governed by The Powers of the Harbourmaster, under Part 7 of the Ports Corporatisation and Waterways Management Act 1995.

All emergencies are to be directed to the Port Operations and Communications Centre (POCC) call sign "Harbour control" on VHF channel 16 & 13.

2.3 LAND SAFETY CONTROL CENTRE

Safety control ashore will operate from South Head Signal Station UBD reference map 70 L5. The control centre will be manned by A.V.C.G. staff. The RVCP will establish a Mobile Control Centre at Middle Head.

2.4 RESPONSIBILITY

Competing yachts will race under AYC rules and regulations. Any vessel not participating in the race is subject to the Navigation (Collision) Regulations, as is any contestant which exits the exclusive use area.

Particular attention should be given to the above International Collision Regulations Rule (Collregs) 2(a) and (b).

- 2(a) Nothing in these Rules shall exonerate any vessel, or the owner, master or crew thereof, from the consequences of any neglect to comply with these Rules or of the neglect of any precaution which may be required by the ordinary practice of seamen, or by the special circumstances of the case.
- 2(b) In construing and complying with these Rules due regard shall be had to all dangers of navigation and collision and to any special circumstances, including the limitations of the vessels involved, which may make a departure for these Rules necessary to avoid immediate danger.

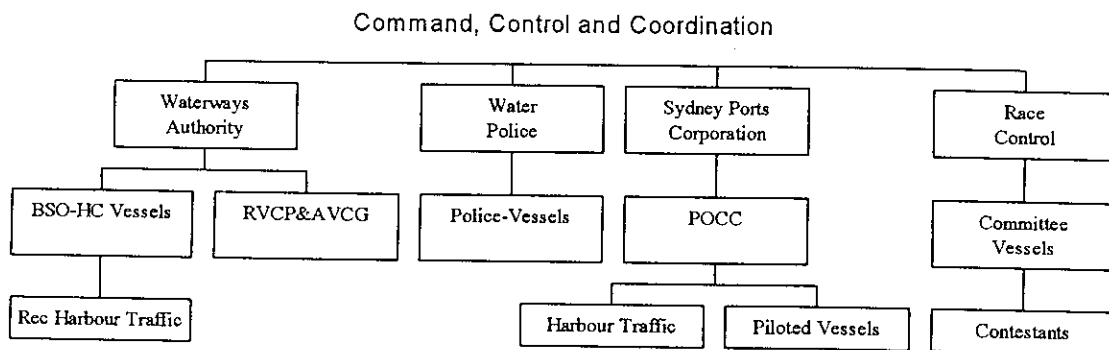
All vessels sailing and involved (support personnel/ coach vessels) in the aquatic-licensed events will operate under the Racing Rules of Sailing 1997-2000, but when not racing or within the vicinity of another vessel not involved in the event, must comply with the Navigation Collision Regulations of NSW (NSW NavCollregs).

NSW Collregs permit the Manly, First Fleet and Lady Class ferries flying the orange diamond priority over sail.

This responsibility must be emphasised at briefings for media, race competitors and charter vessels.

2.5 COMMAND & CONTROL STRUCTURE

Waterways Control will direct each Flank Commander (East & West) using GRN radio, 'Area A' - East, 'Area B' - West. Each Flank Commander will control their sector leaders using GRN. Each flank will comprise sectors patrolled by AVCG, RVCP, Waterpolice and Waterways vessels. Sector leaders will direct their units using VHF and 27 MHz channels.



2.6 COMMUNICATIONS

NSW Water Police Marine VHF 17 (75) Police Radio Channels
C/S Water Police Control

Waterways Authority Waterways GRN - Eastern Flank 'Area A' Western Flank 'Area B'
Marine VHF 17 (75)
C/S Waterways Control
Waterways command vessel will be WA000.
Embarked:-
Keith Caldwell, Steve Black & Chris Bolton (Waterways Control)
S/Const. Dave Upston (Waterpolice Controller)
AVCG Rob James & RVCP Gavin Fear (Coordinators)
CYCA Sailing Adviser Donald Walker-Smith

Waterways Harbour Cleaning vessels will guard Waterways GRN 'Area C'.

R.V.C.P. 27 MHz (27.98) VHF 17 (75)
C/S Coastal Patrol Sydney
Ph: 99693270
Mob: 0418 232174
Fax: 99698346

A.V.C.G. 27 MHz (27.96) VHF 17 (75) UHF (18)
C/S Coast Guard Sydney ;
Ph: 93375033
Fax: 93375251

C.Y.C.A. C/S "Aussie Magic" at Eastern end of Start Line
Phil Thompson 0147 282172
C/S CYC 'Offshore', at Western end Start Line
Mark Robinson 0418 966776
Start Line Waterways Liaison Officer

Sydney Ferries Ferries Domestic Radio Channel. VHF Channel 17 (alternate 13)

There will be one water ambulance, *Blackmores Rescue* operating. This vessels will monitor VHF 17 (16).

The MV Omega, a Randall 50, will be the media control vessel. Callsign "Omega",
Mic Davis, Marine VHF 17 & 72 (27.94 - 27.96 MHz)

2.7 DUTIES & RESPONSIBILITIES

Waterways Authority Control:-	Coordinate whole response activity
Flank Commanders (2):-	Coordinate flank responses Direct Sector Units Inform Control
Sector Leaders (10):-	Coordinate sector responses Inform Sector Commander Patrol Sectors assertively Cover adjacent Sectors to avoid gaps

3.0 VESSELS

3.1 WATERWAYS AUTHORITY VESSELS

Eastern sector leaders (1,3,5&7) will be directed by the Eastern Flank Commander. Western sector leaders (2,4,6,8,10&12) will be directed by the Western Flank Commander. (See Sector Unit designation below and at enclosure 4).

GADARRA with Les Brix-Nielsen, Manager Harbour Cleaning embarked will control 'Harbour Cleaning vessels on Waterways GRN Area C.

Crewing of vessels will be confirmed prior to the race.

Buoy positions at Enclosure 3 within assigned areas are to be monitored at all times by all vessels to ensure that buoys do not drag their anchors.

Sector Areas and patrol vessels are as follows:

Sector 1	WA 028	<u>Roving:</u>	
Sector 2	WA 014	WA 000	(Waterways Control)
Sector 3	WA 003	WA 001	(Eastern Flank Commander)
Sector 4	WA 005	WA 217	
Sector 5	WA 022	WA RIBs	
Sector 6	WA 216		
Sector 7	WA 006		
Sector 8	WA 004		
Sector 10	WA 002		
Sector 12	WA 011	(Western Flank Commander)	

2.9 < (3.2) WATER POLICE

Water police vessels are assigned as below and as per attached chart.

<u>POLICE LAUNCH</u>	<u>PATROL AREA BUOYS</u>	<u>LOCATION</u>
Sector 5	32 - 15	WATSONS BAY
Sector 6	98 - 110	CHOWDER BAY
Sector 10	121 - 134	MIDDLE HEAD
Sector 7	15 - 1	NORTH HEAD
<u>RUNABOUTS</u>		
Sector 1	66 - 46	SHARK ISLAND
Sector 2	66 - 87	CLARK ISLAND
Sector 4	87 - 98	BRADLEYS HEAD
Sector		
Sector		
Sector		

AIR SUPPORT (TBA)

2.10 < (3.3) CYCA RACE CONTROL VESSEL

MV OFFSHORE HMG 36 cruiser

2.11 < (3.4) ROYAL VOLUNTEER COASTAL PATROL/AUSTRALIAN VOLUNTEER COAST GUARD

Disposition of volunteer craft as at Enclosure 4.

R.V.C.P. - 12-15 vessels approximately

A.V.C.G. - 12-15 vessels approximately

3.5 MEDIA VESSELS

There will be approximately six vessels from the media including the "MV Omega" and six race official vessels.

Media and race official vessels will fly prominently, *a red flag with black logo with the letter O in black in one corner*. Flag size 4 ft x 2 ft. Sponsors flags will be flown separately. Each vessel will carry a suitably qualified AYF person as a competent observer.

Each vessel is to remain at least 60m clear of any contestant and AUSSIE ONE, AUSSIE MAGIC, OLYMPIC SPIRIT and CITY OF SYDNEY while in the exclusion zone.

Only vessels flying the official media flag and in possession of official permission from the Waterways Controller are to be allowed on the course proper.

H.data.general.sydhob 98.doc Version updated on 18 December 1998

The media liaison officer will be on board the "Omega".

The media boats skippers briefing will take place at 1700 on Tuesday 22 December in the Media Centre CYC. It is essential for all masters of participating media vessels to attend this briefing. Keith Caldwell and Steve Black will represent the Waterways Authority and Phil Thompson will represent the CYC. Flags authorising participation will be issued at this briefing. Masters are advised: **NO ATTENDANCE, NO FLAG, NO PARTICIPATION**. Masters are reminded that only commercial media vessels in survey will be allowed to participate in the 1998 Sydney Hobart start.

Media vessels participating are:

	BOAT NAME	PERMIT No.	TYPE	SKIPPER	PERSONS
1.	Phoenix	16623	14m 1C	R. Ward	11 pax
2.	Polaris	16255	13.2m 2C	D. Power	7 pax
3.	Shore Patrol	17704	13.5m 1C	J. Shaw	12 pax
4.	Omega	18039	14.8m 2C	(Fship Ctrs)	16 pax
5.	Sea Eagle	18915	13.1m 1C	J. Scarpias	23 pax
6.	Fish Finder	11723	13m 2C	T. Davis	12 pax
7.	Shimano Express	21329	10.4m 2C	S. Insley	8 pax

3. < (4) STARTING LINE

There will be one Start Line - (See enclosure TBC) between Nielsen Park and Bradleys Head.

The starting gun for yachts starting at 1300 will be fired from the VIP Vessel "Aussie One".

4. < (5) IDENTIFICATION

4.1 < (5.1) RACE COMPETITORS

Competing yachts will exhibit a sponsor's decal on each side of their bow and from the backstay port/starboard mizzen, race identification flags measuring approximately 900mm x 600mm as follows:

1. *Bright Blue* with "Telstra" logo.

No other flags will be flown from the same stay whilst the race flag is displayed, with the exception of code flags Bravo (protest) or India (acknowledging infringement).

4.2 < (5.2) WATERWAYS CONTROL

R.V.C.P.& A.V.C.G. volunteer vessels will display the plastic orange "Waterways Control" banners.

4.2.1 < (5.3) DESCRIPTION

Reflective orange plastic oblong sheet with black wording, displayed in a prominent position on control vessels.

4.2.2 < (5.4) CONDITION

Holders of the Waterways Control banners are requested to ensure that they are returned at the agreed time.

5. < (6) SPECTATOR CRAFT & COMMERCIAL VESSEL MOVEMENT

Charter vessels that cannot go outside sheltered waters and other vessels that are not going further than The Heads are not to block the channel at South Head. These vessels should be kept to the Western side of the course where there is more room.

Spectator craft are not to anchor within 100m of the exclusion zone boundaries in the area between the limits of the course, Green Point to Hornby Light and Cannae Point to Outer North Head. See Boaters' Guide brochure. Vessels that are not being taken beyond Sydney Heads should be encouraged to stay in the Western side of the course and be cautioned not to obstruct the tracks of vessels astern of them by attempting to stop or turn back. **NOTE - NO WASH & TEN (10) KNOT MAXIMUM SPEED LIMIT APPLIES IN THE AREA EAST OF BRADLEYS HEAD AND GROTTO POINT**

Vessels which are anchored and adjacent to the exclusive area are to be advised by control vessels to be under way by 1200.

Prior to the start, charter vessels and ferries may station themselves up to the spectator line in the special commercial area Chowder Bay which will be marked by special Waterways orange marker buoys.

No charter vessel or ferry over 20m in length is to be within 20m of the spectator line in other parts of the course.

NO VESSELS ARE PERMITTED TO ATTACH LINES TO MARKER BUOYS AND NAVIGATION MARKS or anchor in close proximity to any submarine cable or pipeline.

6. < (7) MANLY FERRY/JET CAT TIMETABLES/CHARTER VESSELS

FERRY SERVICE

Last departure Sydney	1130	Resume Sydney	1330
Last departure Manly	1145	Resume Manly	1345

JET CAT SERVICE

Last departure Sydney	1135	Resume Sydney	1435
Last departure Manly	1200	Resume Manly	1400

Sydney Ferries masters have been requested not to enter the race area until the racing fleet is clear and to comply with any directions given by Official vessels. *One STA ferry (1145 ferry from Manly) will pass Bradleys Hd at approx. 1200.*

Major charter vessels have been requested to take up early position before the start of the race, no later than 1230, and to comply with the directions given by Official vessels.

7. < (8) BROCHURE DISTRIBUTION

Vessels from Waterways Coast Guard, Coastal Patrol, RMYC and Sydney Water Police will be available for the distribution of brochures to spectator vessels. They will distribute to as many vessels as possible from 1000 onwards. Brochures will also be distributed by Patrol and Coast guard vessels where appropriate.

Brochures will be sent out to Yacht Clubs, Marinas, Chandlers and Mechanics in the Sydney Area from 1 December onwards. Waterways will mail brochures with a covering letter to charter vessel owners by 1st December 1998.

8. < (9) PARADE OF SAIL

Time: 1100
Place: At the entrance to Rushcutters Bay

In order to provide a focus on the competitors pre-race, a parade of participating yachts will take place at the entrance to Rushcutters Bay.

VIP craft, "Olympic Spirit" and "Aussie One" will be in positions as marked on the accompanying map and will be outside the clear channel by 1045.

At 1115, competing yachts will start to exit Rushcutters Bay, under motor via a 30 metre wide channel delineated by marker buoys set in 2 rows at 20 metre intervals. The channel will extend about 700 metres into the harbour. The spectators will be encouraged to gather along the edges of the marked clear channel.

Starting yachts will proceed directly to the manoeuvring area near the start line.

Waterways WA 003 and WA 028 will maintain controlled access to Rushcutters Bay. In short, the inner bay will be discouraged to spectators. There is no identifying flag for access to the bay although most boats associated with the race will fly their approved flag.

9. < (10) AUSSIE ONE, AUSSIE MAGIC, OLYMPIC SPIRIT & CITY OF SYDNEY.

Aussie One is the Telstra corporate vessel, start vessel and will have Telstra banners. Olympic Spirit is CYCA VIP vessel and will fly CYC flags and banners. Aussie Magic is the Start Vessel at the Eastern end. City of Sydney is the Ansett/Traveland vessel and will carry Ansett/Traveland signage. City of Sydney will be positioned on the Western side of the course.

At the conclusion of the Parade of Competitors, Aussie One will proceed to position ahead of the start line by 250 metres, just within the Exclusion Zone on the Eastern side. Olympic Spirit will be in a similar position on the Western side. Aussie Magic will be at the Eastern end of the Start line.

These vessels will maintain position until the start at 1300 when they will proceed as close as possible along the inside perimeter of the course 250 metres ahead of the competing yachts.

From these positions, these vessels will be prime vantage spots to view the start and the aerial activity.

These boats will be under the instructions of the CYCA and attend the start line briefing.

10. < (11) START GUNS

Time: 1250
Time: 1255
Time: 1300
Place: Aussie One

The cannon will be delivered to Aussie One by the CYCA.

Cancel this Op Order on 27 December 1998.

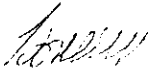
11. < (12) DISTRIBUTION

Internal:

CEO, GMO, RMS, Team Leader On Water Operations, Managers: Special Aquatic Events, Broken Bay, Botany Bay, Harbour Cleaning, Vessel Survey, Corporate Communications, Legal Manager, BSOs File.

External:

FONSC, Water Police, RVCP, AVCG (x20), CYCA, STA, SPC (for ACOS info), POCC, Chartered Vessels Association, Port Services Mgr Garden Island, HMAS WATSON, PENGUIN, HQ TC, AYF, YA of NSW Commercial Vessels User Group (CVUG) Internet - Waterways Website: www.waterways.nsw.gov.au



Keith Caldwell
Event Manager

ENCLOSURE 1

NSW MARINE NOTICE 12/98

AUSTRALIA - NSW - PORT JACKSON

SYDNEY TO HOBART YACHT RACE - NAVIGATION RESTRICTION

SATURDAY 26 DECEMBER 1998

Masters and persons in charge of vessels are advised that the annual Sydney to Hobart Yacht Race will commence on Sydney Harbour at 1.00pm (Eastern Summer Time) on 26 December 1998.

The race will start in the area between Bradleys Head and Neilson Park. An exclusive use area will be established in support of the race between 12.00 and 2.00 pm (Eastern Summer Time). This area will be marked by yellow aquamark buoys. During this period entry to the area will be prohibited to all non-participating and non-accredited vessels.

Spectator craft should keep clear of the racing fleet at all times, including the period before the start of the race, and as the contestants make their way to the Heads and out to sea. Small craft should keep clear of congested areas after the race starts as a great deal of turbulence can be generated by spectator vessels. All vessels should exercise caution in following the fleet out of the harbour.

The No Wash & Ten (10) knot maximum speed rule will apply to spectator craft which operate in the high density traffic areas around the Exclusive Use Zone and will be enforced. Vessels must be kept to a safe speed at all times to avoid the risk of collision and the creation of dangerous wash.

Competing yachts can be identified by a special flag bearing the sponsor's logo which will be flown from their backstay or mizzen shroud.

Attention is drawn to the powers of the Harbour Master governing the overall direction and control of vessels under Part 7 of the Port Corporatisation and Waterways Management Act 1995.

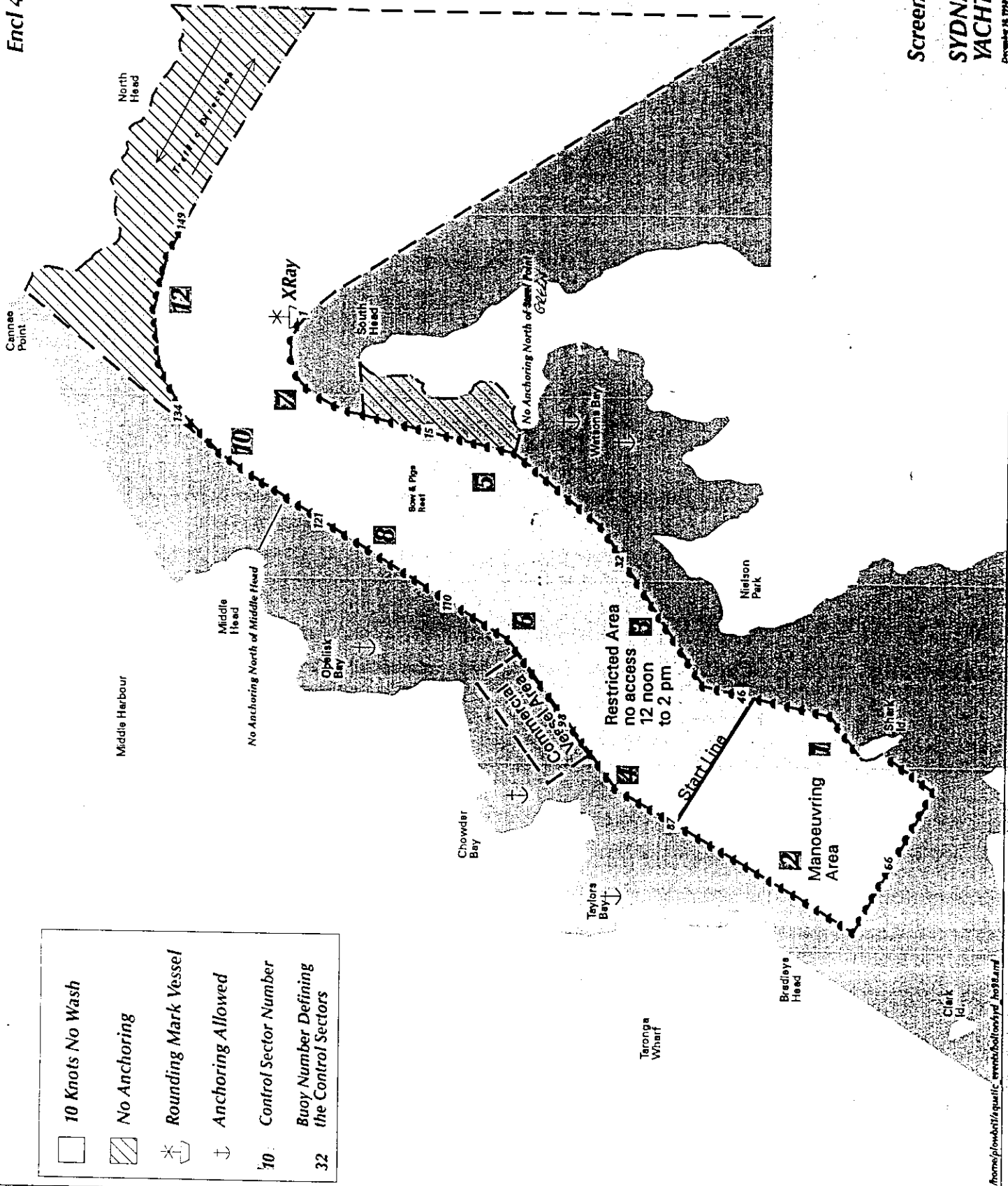
Sydney Aquatic Event brochures are available through marinas, boat clubs and Waterways Authority offices at 207 Kent Street Sydney, Rozelle Bay, Hornsby, Blacktown, Sans Souci, Miranda, Liverpool and Gosford, and from authorised vessels on the day. For further information please call our Boating Info Line on 13 12 56.

T. Williams
Sydney Regional Manager
WATERWAYS AUTHORITY



NOT TO BE USED FOR
NAVIGATION PURPOSES

Screen Sectors
SYDNEY TO HOBART
YACHT RACE 1998
December 18, 1998



	10 Knots No Wash
	No Anchoring
	Rounding Mark Vessel
	Anchoring Allowed
10	Control Sector Number
32	Buoy Number Defining the Control Sectors

home/p10mbn1/eqatic_events/hobart/hobart_1998.rmf



4 DAY FORECAST CHARTS

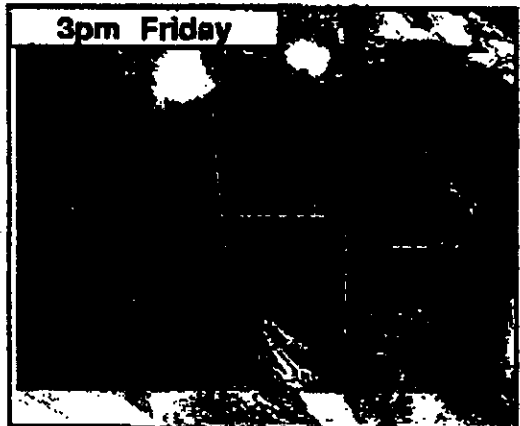
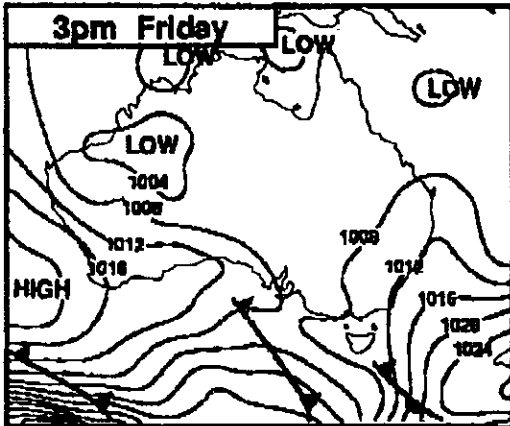
Bureau of Meteorology

Weather by Fax

Fax No. 1902 935 002

WEATHER MAPS AND RAINFALL AREAS ISSUED: 5.00pm Friday 25 December 1998

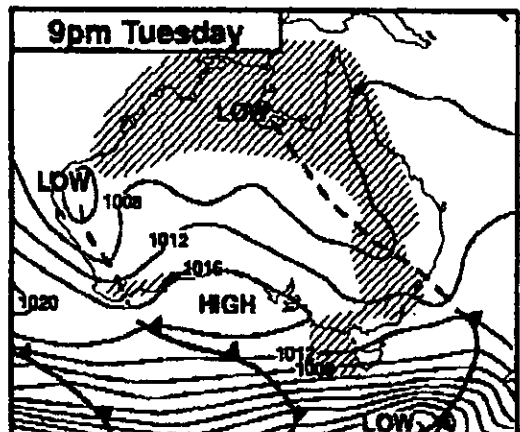
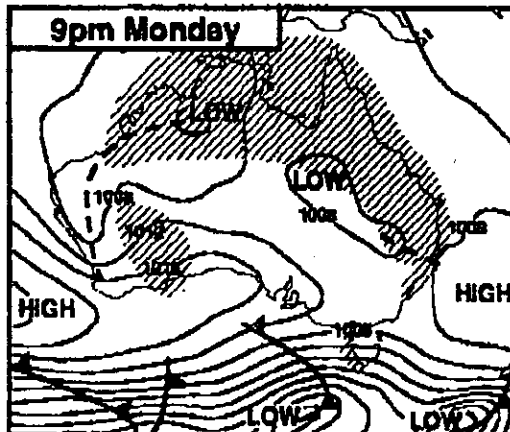
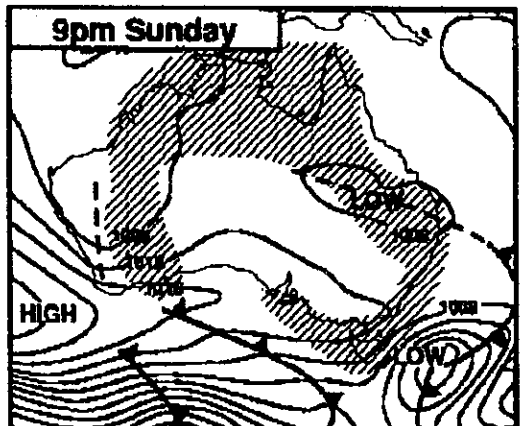
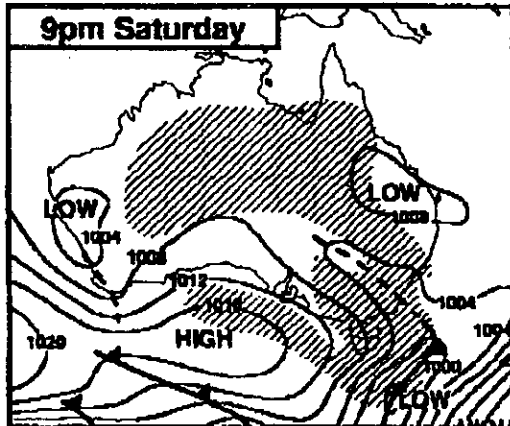
FRIDAY
3PM (EST)
WEATHER MAP
AND
SATELLITE
PICTURE



FORECAST
WEATHER MAPS
AND RAINFALL
AREAS

Maps and rainfall areas are updated daily around 6pm. Maps are based on a combination of computer modelling by the Bureau's National Meteorological Centre, Melbourne, with fine tuning supplied by Regional Forecasting Centres around Australia.

Rain shading indicates possible rainfall in the 24hrs to 8pm.



TIMES
 All times listed are (EST) Eastern Standard Time.
 Adjust for Daylight Saving Time.

Forecast Rain to 9pm HectoPascal (hpa) trough cold front

© Commonwealth of Australia 1997, Bureau of Meteorology. Prepared by the National Media Graphics Unit. Rainfall provided by Special Services Unit, Sydney.

Main directory of Weather by Fax service - Freepoll 1800 830100
 Latest surface weather maps. (MSL analysis) 1902 835 210
 Latest satellite picture (Australian region) 1902 935 201
 Bureau 1800 numbers are charged at 60c per minute.
 Met on the Net <http://www.bom.gov.au/>