

**WATERWAYS AUTHORITY
CYCA
SYDNEY TO
HOBART
START**



**SUNDAY
26 DECEMBER 1999**

SYDNEY HARBOUR

Reference: Marine Notice 12/99

Waterways
We're With You On The Water

OP ORDER 17 /99

Contents

1. SCHEDULE OF EVENTS	3
2. CONTROLLED USE AREA	5
2.1 EMERGENCY AND MEDIVAC TRANSFER LOCATIONS	5
2.2 CO-ORDINATION - EMERGENCY	5
2.3 LAND SAFETY CONTROL CENTRE	5
2.4 RESPONSIBILITY	6
2.5 COMMAND & CONTROL STRUCTURE	6
2.6 COMMUNICATIONS	7
2.7 DUTIES & RESPONSIBILITIES	8
3. VESSELS	
3.1 WATERWAYS AUTHORITY VESSELS	8
3.2 WATER POLICE	9
3.3 CYCA RACE CONTROL VESSEL	9
3.4 A.V.C.G. / R.V.C.P. VESSELS	9
3.5 MEDIA VESSELS	9
4. STARTING LINE	10
5. IDENTIFICATION	10
5.1 RACE COMPETITORS	10
5.2 WATERWAYS CONTROL	11
5.2.1 DESCRIPTION	11
5.2.2 CONDITION	11
6. SPECTATOR CRAFT & COMMERCIAL VESSELS - MOVEMENTS & MOORING	11
7. MANLY FERRY/JET CAT TIMETABLES/CHARTER VESSELS	12
8. BROCHURE DISTRIBUTION	12
8.1 CUSTOMER SURVEY	12
9. PARADE OF SAIL	12
10. AUSSIE ONE, OCEAN SPIRIT AND AUSSIE MAGIC	13
11. START GUNS	13
12. DISTRIBUTION	14
Enclosures: 1	Marine Notice 12/99
2	The Start
3	Patrol Sectors

1. SCHEDULE OF EVENTS

- 0600 Begin laying buoys CYCA/Harbour Cleaning
- 0900 Gather for coffee Waterways Rozelle
- 0930 Event Manager briefs Waterways, SPC, SWP, R.V.C.P., A.V.C.G. and RMYC personnel at Waterways, Rozelle. Cruising Yacht Club sailing adviser Donald Walker Smith in attendance.
- 1030 VIP boats, "OCEAN SPIRIT", "AUSSIE MAGIC" and "AUSSIE ONE" depart Darling Harbour.
Buoys in place for parade - CYCA/Waterways
- 1030-1230 Controlled access to Rushcutters Bay
Waterways Patrol vessels attend
- 1100 – 1600 Port closed to major commercial shipping
- 1100 - 1500 Non active Sydney Harbour Waterways Exclusion Zone in position
- 1100 All Control Vessels on station.
Waterways, Water Police and R.V.C.P / A.V.C.G. volunteers.
- Vessels issue brochures. ** Customer Survey commences.**
- MV "OMEGA" embarks Media Liaison Officer and representatives of the Media from Cruising Yacht Club as organised by Cruising Yacht Club.
"AUSSIE ONE", "AUSSIE MAGIC", "AUSSIE LEGEND", "COMMISSIONER" and "OCEAN SPIRIT" in position for parade.
- 1100 The first yachts clear CYCA marina for Parade of Sail.
- VIP vessels assemble at designated positions at Parade of Sail Channel at Rushcutters Bay exit.
- 1145 Radio check with Control Vessels. Call sign "Waterways Control". East sector control by R.V.C.P. West sector control by AVCG.
- * Spectator craft sails to be down.
- 1200 Activate Sydney Harbour Waterways Exclusion Zone.
- Activate No Wash zone and activate 8 Knot speed zone – imaginary lines joining:
1. Garden Island Port Hand Beacon & Bradleys Head Light
 2. Most Northerly Point of Middle Head & Cannae Point Flagstaff
 3. North Head Starboard Hand Beacon & Macquarie Light
- Cruising Yacht Clubs check of big buoy positions commence.
Yacht manoeuvring and race area cleared of all spectator craft.

- 1200 All VIP boats move to designated places on starting line.
Start Vessel – “*Offshore*” in position at West end of Start Line.
- 1215 Marker vessels on station at positions X-Ray, and Zulu (Four 12' x 7' special marker buoys) and at Start Lines.
- 1215 “YOUNG ENDEAVOUR”, Radio Relay Vessel sails to control Point Zulu.
“AUSSIE ONE”, and “AUSSIE MAGIC” in position mid line and 500m to the North of start line.
- 1250 Ten minute gun for main fleet fired from “AUSSIE ONE”.
- 1255 Five minute gun for main fleet fired from “AUSSIE ONE”.
* Superyacht “MARI CHA III” commences racing from start line.
- 1300 Race start - Start Line at Nielson Park. Start Gun fired and race commences. VIP fleet remain ahead of fleet and escort to the Heads.

Escort spectator fleet downstream, ensuring exclusion zone maintained and 8 knot speed restrictions strictly complied with.
- 1430 VIP boats return to respective berths.
- 1500 De-activate 8 knot speed zone.
- 1500 Waterways patrol vessels assist with cordons around Harbour Cleaning vessels involved with buoy recovery
- 1600 Port opened to major commercial shipping.

NOTE:

- 1) All course marker buoys will be laid and recovered by Cruising Yacht Club. Boundary buoys will be laid and recovered by Harbour Cleaning.
- 2) Marker buoys off Bradleys Head to be laid as late, and recovered as early as possible after the start.
- 3) Marker buoy Xray will be laid as close as possible to Waterways number 4 buoy.

Tide Details

L 0530 hours 0.40metres

H 1155 hours 1.90metres

L 1838 hours 0.20 metre

2. CONTROLLED USE AREA

2.1 EMERGENCY AND MEDIVAC TRANSFER LOCATIONS

Primary drop off points for persons requiring conveyance by ambulance are:

- HMAS Penguin - UBD Ref Map 58 D 8
- Garden Island - UBD Ref Map 2 D 5

Paramedics and St John Ambulance personnel will be on Control vessels stationed around the course.

In the event of person requiring medical attention, contact is to be made with "Waterways Control" in WA 000 who will relay information to the nearest vessel with medical personnel on board. If evacuation is necessary, "Waterways Control" is to arrange Medivac Point, Water Transport and Ambulance Services.

2.2 CO-ORDINATION - EMERGENCY

In the event of an emergency, the vessel identifying the problem is to transmit the emergency procedures as laid down in the Radio Operators Handbook issued by the Department of Transport and Communications. Should it be deemed necessary by the Commander Sydney Water Police, the Marine Disaster Plan (MARDAP) will be activated.

The overall direction and control of vessels within the port boundaries is governed by The Powers of the Harbourmaster, under Part 7 of the Ports Corporatisation and Waterways Management Act 1995.

All emergencies are to be directed to the Port Operations and Communications Centre (POCC) call sign "Harbour control" on VHF channel 16 & 13.

2.3 LAND SAFETY CONTROL CENTRE

Safety control ashore will operate from South Head Signal Station UBD reference map 70 L5. The control centre will be manned by A.V.C.G. staff. The RVCP will establish a Mobile Control Centre at Middle Head.

2.4 RESPONSIBILITY

Competing yachts will race under AYF rules and regulations. Any vessel not participating in the race is subject to the Navigation (Collision) Regulations, as is any contestant who exits the exclusive use area.

Particular attention should be given to the above International Collision Regulations Rule (Collregs) 2(a) and (b).

2(a) Nothing in these Rules shall exonerate any vessel, or the owner, master or crew thereof, from the consequences of any neglect to comply with these Rules or of the neglect of any precaution which may be required by the ordinary practice of seamen, or by the special circumstances of the case.

2(b) In construing and complying with these Rules due regard shall be had to all dangers of navigation and collision and to any special circumstances, including the limitations of the vessels involved, which may make a departure for these Rules necessary to avoid immediate danger.

All vessels sailing and involved (support personnel/ coach vessels) in aquatic licensed events will operate under the Racing Rules of Sailing 1997-2000, but when not racing or within the vicinity of another vessel not involved in the event, must comply with the Navigation Collision Regulations of NSW (NSW NavCollregs).

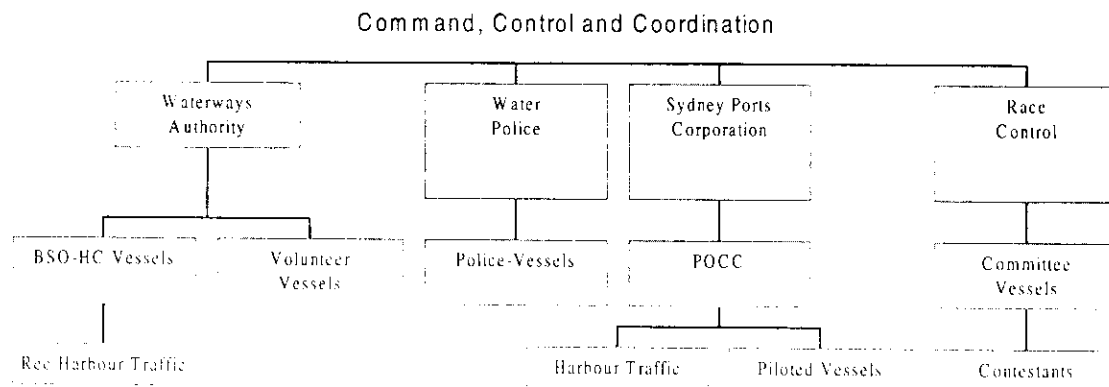
NSW Collregs permit the Manly, First Fleet and Lady Class ferries flying the orange diamond priority over sail.

This responsibility must be emphasised at briefings for media, race competitors and charter vessels.

2.5 COMMAND & CONTROL STRUCTURE

Waterways Control will direct each Flank Commander (East & West) using GRN radio. Each Flank Commander will control their sector units using GRN, VHF and 27 MHz. Each flank will comprise sector unit AVCG, RVCP, Waterpolice and Waterways vessels.

The above responsibility is to be emphasised at briefings.



2.6 COMMUNICATIONS

NSW Water Police Waterways Government Radio Network (GRN)
Marine VHF 17 (75) Police Radio Channels
C/S Water Police Control

Waterways Authority Waterways GRN
Marine VHF 17 (75)
C/S Waterways Control

Waterways command vessel will be WA000.

Embarked:-

Steve Nugent, Chris Bolton & Hendrik Clasie (Waterways Control)

S/Const. TBA (Water Police Controller)

AVCG - Bob Foster (Coordinator)

RVCP - Gavin Fear (Coordinator)

CYCA Sailing Adviser - Donald Walker-Smith

Other Waterways vessels will guard nominated Waterways GRN circuits as directed.

R.V.C.P. 27 MHz (27.98) VHF 17 (75)
C/S Coastal Patrol Sydney
Ph: 99693270
Mob: 0418 232174
Fax: 99698346

A.V.C.G. 27 MHz (27.96) VHF 17 (75) UHF (18)
C/S Coast Guard Sydney
Ph: 93375033
Fax: 93375251

C.Y.C.A. C/S "AUSSIE MAGIC" at Eastern end of Start Line
Phil Thompson 0147 282172
C/S CYC 'Offshore', at Western end Start Line
Mark Robinson 0418 966776
Start Line Waterways Liaison Officer

Sydney Ferries Ferries Domestic Radio Channel. VHF Channel 17 (alternate 13)

There will be one water ambulance, *Blackmores Rescue* operating. This vessel will monitor VHF 17 (16) and GRN - Area "A".

The MV OMEGA, a Randall 50, will be the media control vessel - Callsign "OMEGA", Marine VHF 17 & 72 (27.94 - 27.96 MHz)

2.7 DUTIES & RESPONSIBILITIES

Waterways Authority Control:-	Coordinate whole response activity
Flank Commander (2):-	Coordinate flank responses Direct Sector Units Inform Control
Sector Units:-	Coordinate sector responses Inform Sector Commander Patrol Sectors assertively Cover adjacent Sectors to avoid gaps

3 VESSELS

3.1 WATERWAYS AUTHORITY VESSELS

Eastern Flank vessels will be directed by the Eastern Flank Commander – Peter Browne.

Western Flank vessels will be directed by the Western Flank Commander – Rob Everett. See Sector Unit designation below and at enclosure.

“BANGALEE” with Wayne Cartner, Team Leader Harbour Cleaning embarked will control Harbour Cleaning vessels “HC4”, “HC5” & “HC6”, on Waterways GRN - Harbour Cleaning Channel.

Crewing of vessels will be confirmed prior to the race.

Buoy positions at Enclosure 3 within assigned areas are to be monitored at all times by all vessels to ensure that buoys do not drag their anchors.

Sector Areas and patrol vessels are as follows:

Waterways 00	- Control - Roam	GRN - A & B
Waterways 01	- East Flank Command - Roam East Flank	GRN - A
Waterways 02	- West Flank Command - Roam West Flank	GRN - B
Waterways 03	- Sector 3	GRN - A
Waterways 04	- Sector 8	GRN - B
Waterways 05	- Sector 4	GRN - B
Waterways 06	- Sector 7	GRN - A
Waterways 101	- Sector 2	GRN - B
Waterways 105	- Sector 9	GRN - A & B
Waterways 216	- Sector 6	GRN - B
Waterways 217	- Sector 5	GRN - A
Waterways 219	- Sector 1	GRN - A

Commercial Vessel Surveillance

On Water - WA105 - Senior Mgr Investigations, Keith Caldwell.

On Land - SOUTH HEAD, Sydney Harbour National Park, BSO Marine Investigations, Chris Isted.

3.2 WATER POLICE

Approximately 36 Police and Water Police vessels will be in attendance, however, many of these will be undertaking training exercises, for the Olympics. Some of these vessels may not wear the markings of the Police.

Designated **Water Police** vessels are to be assigned to various sectors.

<u>POLICE LAUNCH</u>	/	<u>PATROL AREA BUOYS</u>	<u>LOCATION</u>
1 LEES	/	10 - 16	WATSONS BAY
2 ABBOTT	/	36 - 42	CHOWDER BAY
3 NEMESIS	/	42 - 47	MIDDLE HEAD
4 PRICE	/	47 - 51	NORTH HEAD
5 INTREPID	/	16 - 25	SHARK ISLAND
6 SEA HAWK	/	25 - 29	CLARK ISLAND
	/	29 - 36	BRADLEYS HEAD
<u>RUNABOUTS</u>			
7 FARM COVE	/		
8 WP 10	/		
9 RHIB 06	/		
10 RHIB 07	/		
11 KAT 01	/		
12 KAT 02	/		
13 SIRIUS COVE	/		

3.3 CYCA RACE CONTROL VESSEL

MV "OFFSHORE" - HMG 36' Cruiser.

3.4 A.V.C.G. / R.V.C.P. VESSELS

Sectors as allocated at Enclosure 4.

R.V.C.P. - 9 vessels approximately

A.V.C.G. - 12 vessels approximately

3.5 MEDIA VESSELS

There will be approximately seven vessels from the media including the MV "OMEGA" and six race official vessels.

Media and race official vessels will fly prominently, *a red flag with black logo with the letter O in black in one corner*. Flag size 4 ft x 2 ft. Sponsors flags will be flown separately. Each vessel will carry a suitably qualified AYF person as a competent observer.

Each vessel is to remain at least 60m clear of any contestant and "AUSSIE ONE", "AUSSIE MAGIC", "AUSSIE LEGEND", "OCEAN SPIRIT" and "COMMISSIONER", while in the exclusion zone.

Only vessels flying the official media flag and in possession of official permission from the Waterways Controller are to be allowed on the course proper.

The media liaison officer will be on board the "OMEGA".

The media boats skippers briefing will take place at 1700 hours on Tuesday 21st December 1999 in the Media Centre CYC. It is essential for all masters of participating media vessels to attend this briefing. Chris Bolton and Steve Nugent will represent the Waterways Authority and Phil Thompson will represent the CYC. Flags authorising participation will be issued at this briefing. Masters are advised: **NO ATTENDANCE, NO FLAG, NO PARTICIPATION.**

Masters are reminded that only commercial media vessels in survey will be allowed to participate in the 1999 Sydney Hobart start.

Media vessels participating are:

	BOAT NAME	PERMIT No.	TYPE	SKIPPER	PERSONS
1.	Go Cresta 50	16657	14m 1C		7 pax
2.	Polaris HMG 43	16255	13.2m 2C	D. Power	7 pax
3.	Namanula HMG 43	21633	13.2m 1E		25 pax
4.	Omega Randall 50	18039	14.8m 2C	(Fship Ctrs)	5 pax
5.	Fish Finder	11723	'13m 2C	T. Davis	12 pax
6.	Offshore Express	21329	10.4m 2C	S. Insley	8 pax

4. STARTING LINE

There will be one Start Line - (See enclosure) between Nielson Park and Bradleys Head.

The starting gun for yachts starting at 1300 will be fired from the VIP Vessel "AUSSIE ONE".

5. IDENTIFICATION

5.1 RACE COMPETITORS

Competing yachts will exhibit a sponsor's decal on each side of their bow and from the backstay port/starboard mizzen, race identification flags measuring approximately 900mm x 600mm as follows:

1. *Bright Blue* with "Telstra" logo.

No other flags will be flown from the same stay whilst the race flag is displayed, with the exception of code flags Bravo (protest) or India (acknowledging infringement).

5.2 WATERWAYS CONTROL

R.V.C.P.& A.V.C.G. volunteer vessels will display the plastic orange "Waterways Control" banners.

5.2.1 DESCRIPTION

Reflective orange plastic oblong sheet with black wording, displayed in a prominent position on control vessels.

5.2.2 CONDITION

HOLDERS of the Waterways Control banners are requested to ensure that they are returned at the agreed time.

6. SPECTATOR CRAFT & COMMERCIAL VESSEL MOVEMENT

Charter vessels that cannot go outside sheltered waters and other vessels that are not going further than The Heads are not to block the channel at South Head. These vessels should be kept to the Western side of the course where there is more room.

Spectator craft are not to anchor within 100m of the exclusion zone boundaries in the area between the limits of the course, Green Point to The Gap and Middle Head to Outer North Head. See Boaters' Guide brochure. Vessels that are not being taken beyond Sydney Heads should be encouraged to stay in the Western side of the course and be cautioned not to obstruct the tracks of vessels astern of them by attempting to stop, turn around or turn back.

*** NOTE - NO WASH & EIGHT (8) KNOT MAXIMUM SPEED LIMIT APPLIES, FROM 1200 HOURS TO 1400 HOURS, IN THE AREA OF IMAGINARY LINES JOINING:**

- 1. GARDEN ISLAND PORT HAND BEACON and BRADLEYS HEAD**
- 2. MOST NORTHERLY POINT OF MIDDLE HEAD and CANNAE POINT FLAGSTAFF**
- 3. NORTH HEAD STARBOARD BEACON and MACQUARIE LIGHT**

Vessels which are anchored and adjacent to the exclusive area are to be advised by control vessels to be under way by 1200.

**** Vessels that desire to observe the fleet sailing down the harbour and out of the Heads are to be encouraged to commence moving downstream, before the race start, in order to avoid the possibility of exceeding the spectator speed and wash restrictions.**

Prior to the start, charter vessels and ferries may station themselves up to the spectator line in the special commercial area Chowder Bay which will be marked by special Waterways orange marker buoys.

No charter vessel or ferry over 20m in length is to be within 20m of the spectator line in other parts of the course.

NO VESSELS ARE PERMITTED TO ATTACH LINES TO MARKER BUOYS AND NAVIGATION MARKS or anchor in close proximity to any submarine cable or pipeline.

7. MANLY FERRY/JET CAT TIMETABLES / CHARTER VESSELS

FERRY SERVICE

Last departure Sydney	1130	Resume Sydney	1330
Last departure Manly	1145	Resume Manly	1345

JET CAT SERVICE

Last departure Sydney	1135	Resume Sydney	1335
Last departure Manly	1200	Resume Manly	1400

Sydney Ferries masters have been requested not to enter the race area until the racing fleet is clear and to comply with any directions given by Official vessels. *One STA ferry (1145 ferry from Manly) will pass Bradleys Hd at approx. 1200.*

Major charter vessels have been requested to take up early position before the start of the race, no later than 1230, and to comply with the directions given by Official vessels.

8. BROCHURE DISTRIBUTION

Vessels from Waterways, Coast Guard, Coastal Patrol, RMYC and Sydney Water Police will be available for the distribution of summer boating brochures to spectator vessels. They will distribute to as many vessels as possible from 1000 onwards. Brochures will also be distributed by AVCG and RVCP vessels where appropriate.

Brochures will be sent out to Yacht Clubs, Marinas, Chandlers and Mechanics in the Sydney Area from 6 December onwards. Waterways will mail brochures with a covering letter to charter vessel owners by 6 December 1999.

8.1 CUSTOMER SURVEY

Control units are tasked to identify potential clients, by taking a note of vessel registration or survey numbers, to enable the mailing of survey forms to the masters of those vessels. The times of 1100, 1130, 1200 and 1230 hours are to be used to gather vessel details, by noting five to ten registrations at each time slot. The information gained from the surveys will be used to assess the level of Waterways Authority client satisfaction.

9. PARADE OF SAIL

Time: 1100
Place: At the entrance to Rushcutters Bay

In order to provide a focus on the competitors pre-race, a parade of participating yachts will take place at the entrance to Rushcutters Bay.

VIP craft, "OCEAN SPIRIT" and "AUSSIE ONE" will be in positions as marked on the accompanying map

At 1115, competing yachts will start to exit Rushcutters Bay, under motor via a 30 metre wide channel delineated by marker buoys set in 2 rows at 20 metre intervals. The channel will extend about 700 metres into the harbour. The spectators will be encouraged to gather along the edges of the marked clear channel.

Starting yachts will proceed directly to the manoeuvring area near the start line.

Waterways WA 003 and WA219 will maintain controlled access to Rushcutters Bay. In short, the inner bay will be discouraged to spectators. There is no identifying flag for access to the bay although most boats associated with the race will fly their approved flag.

10. AUSSIE ONE, AUSSIE MAGIC, AUSSIE LEGEND, OCEAN SPIRIT & COMMISSIONER

“AUSSIE ONE” is the Telstra corporate vessel, start vessel and will have Telstra banners. “OCEAN SPIRIT” is CYCA VIP vessel and will fly CYC flags and banners. “AUSSIE MAGIC” is the Start Vessel at the Eastern end. “COMMISSIONER” is the Ansett/Traveland vessel and will carry Ansett/Traveland signage. “COMMISSIONER” and “AUSSIE LEGEND” will be positioned on the Western side of the course.

At the conclusion of the Parade of Competitors, “AUSSIE ONE” will proceed to position ahead of the start line by 250 metres, just within the Exclusion Zone on the Eastern side. “OCEAN SPIRIT” will be in a similar position on the Western side. “AUSSIE MAGIC” will be at the Eastern end of the Start line.

These vessels will maintain position until the start at 1300 when they will proceed as close as possible along the inside perimeter of the course 250 metres ahead of the competing yachts.

From these positions, these vessels will be prime vantage spots to view the start and the aerial activity.

These boats will be under the instructions of the CYCA and attend the start line briefing.

11. START GUNS

Time: 1250
Time: 1255
Time: 1300
Place: “AUSSIE ONE”

The cannon will be delivered to “AUSSIE ONE” by the CYCA.

Cancel this Op Order on 27 December 1999.

12. DISTRIBUTION

Internal:

CEO, GMOps, RMSyd, RMBroken Bay, TLOpsSyd, Managers: Special Aquatic Events, Botany Bay, Harbour Cleaning, Vessel Survey, Corporate Communications, Legal Manager, BSOs File, Infoline..

External:

FONSC, Water Police, RVCP, AVCG, CYCA, STA, SPC (for ACOS info), POCC, Chartered Vessels Association, Port Services Mgr Garden Island, HMAS WATSON, AYF, YA of NSW, Commercial Vessels User Group (CVUG) Internet - Waterways Website: www.waterways.nsw.gov.au

Steve Nugent
Event Manager

SYDNEY TO HOBART YACHT RACE - NAVIGATION RESTRICTION

SUNDAY 26 DECEMBER 1999

Masters and persons in charge of vessels are advised that the annual Sydney to Hobart Yacht Race will commence on Sydney Harbour at 1.00pm (Eastern Summer Time) on 26 December 1999.

The race will start in the area between Bradleys Head and Neilson Park. An exclusive use area will be established in support of the race between 1200 hours and 1400 hours. This area will be marked by yellow aquamark buoys. During this period entry to the area will be prohibited to all non-participating and non-accredited vessels.

Spectator craft should keep clear of the racing fleet at all times, including the period before the start of the race, and as the contestants make their way to the Heads and out to sea. Small craft should keep clear of congested areas after the race starts as a great deal of turbulence can be generated by spectator vessels. All vessels should exercise caution in following the fleet out of the harbour.

A No Wash (Make No Waves) rule will apply to spectator craft which operate in the high density traffic areas around the Exclusion Zone and will be enforced.

An Eight (8) knot speed limit zone will apply from 1200 hours to 1400 hours on the 26th December 1999, within the following area described as - Imaginary lines joining:

1. Garden Island Port Hand Beacon and Bradleys Head Light
2. Most Northerly Point of Middle Head and Cannae Point Flagstaff
3. North Head Starboard Hand Beacon and Macquarie Light.

Accredited vessels, such as designated official and safety vessels, emergency or rescue vessels, will be exempted from these restrictions subject to other instructions.

All vessels must be kept to a safe speed at all times to avoid the risk of collision and the creation of dangerous wash. Speed limit restrictions will be rigidly enforced. Spectator craft in the vicinity of the start line should commence moving downstream, before the race commences, in order to observe the race fleet proceed to sea.

Competing yachts can be identified by a special flag bearing the sponsor's logo which will be flown from their backstay or mizzen shroud.

Attention is drawn to the powers of the Harbour Master governing the overall direction and control of vessels under Part 7 of the Port Corporatisation and Waterways Management Act 1995.

Sydney Summer Aquatic Events brochures are available through marinas, boat clubs and Waterways Authority Offices at 207 Kent Street Sydney, Rozelle Bay, Hornsby, Blacktown, Miranda, Liverpool and Gosford, and from authorised vessels on the day. For further information, please call our Waterways Boating Info Line on 13 12 56.

**NSW MARINE NOTICE 12/99
AUSTRALIA - NSW - PORT JACKSON**